

STRUCTURAL

Tension Control
196-197



A325 Bolts
197-199



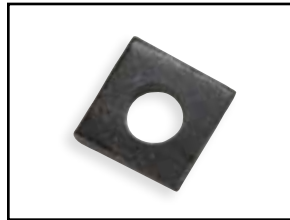
A325 Bolts
Galvanized 200-201



Structural Nuts
201-202



Bevel Washers
202



Structural Washers
202



B7 Studs
203-211



Anchor Bolts
212-213



KEY:
P.O.A. = Price on Availability

STRUCTURAL

Tension Control Bolt Sets



Also available in galvanized.

| | | A325 | A490 |
|----------|------------------|-------------|-------------|
| Keg Qty. | Size | Plain | Plain |
| 300 | 3/4"-10 X 1-3/4" | F-100019 | F-100119 |
| 280 | 3/4"-10 X 2" | F-100020 | F-100120 |
| 270 | 3/4"-10 X 2-1/4" | F-100021 | F-100121 |
| 250 | 3/4"-10 X 2-1/2" | F-100022 | F-100122 |
| 250 | 3/4"-10 X 2-3/4" | F-100023 | F-100123 |
| 240 | 3/4"-10 X 3" | F-100024 | F-100124 |
| 230 | 3/4"-10 X 3-1/4" | F-100025 | F-100125 |
| 220 | 3/4"-10 X 3-1/2" | F-100026 | F-100126 |
| 200 | 3/4"-10 X 3-3/4" | F-100027 | F-100127 |
| 190 | 3/4"-10 X 4" | F-100028 | F-100128 |
| 180 | 3/4"-10 X 4-1/4" | F-100029 | F-100129 |
| 180 | 3/4"-10 X 4-1/2" | F-100030 | F-100130 |
| 160 | 3/4"-10 X 5" | F-100032 | F-100132 |
| 130 | 3/4"-10 X 5-1/2" | F-100034 | F-100134 |
| 120 | 3/4"-10 X 6" | F-100036 | F-100136 |
| | | | |
| 200 | 7/8"-9 X 2" | F-100051 | F-100151 |
| 190 | 7/8"-9 X 2-1/4" | F-100052 | F-100152 |
| 180 | 7/8"-9 X 2-1/2" | F-100053 | F-100153 |
| 180 | 7/8"-9 X 2-3/4" | F-100054 | F-100154 |
| 170 | 7/8"-9 X 3" | F-100055 | F-100155 |
| 160 | 7/8"-9 X 3-1/4" | F-100056 | F-100156 |
| 150 | 7/8"-9 X 3-1/2" | F-100057 | F-100157 |
| 140 | 7/8"-9 X 3-3/4" | F-100058 | F-100158 |
| | | | |
| 140 | 1"-8 X 2" | F-100081 | F-100180 |
| 140 | 1"-8 X 2-1/4" | F-100082 | F-100181 |
| 130 | 1"-8 X 2-1/2" | F-100083 | F-100182 |
| 130 | 1"-8 X 2-3/4" | F-100084 | F-100183 |
| 120 | 1"-8 X 3" | F-100085 | F-100184 |
| 120 | 1"-8 X 3-1/4" | F-100086 | F-100185 |
| 110 | 1"-8 X 3-1/2" | F-100087 | F-100186 |
| 110 | 1"-8 X 3-3/4" | F-100088 | F-100187 |
| | | A325 | A490 |

STRUCTURAL

Tension Control Bolt Sets (continued)

| Keg Qty. | Size | Plain | Plain |
|----------|---------------|----------|----------|
| 100 | 1"-8 X 4" | F-100089 | F-100188 |
| 100 | 1"-8 X 4-1/4" | F-100090 | F-100189 |
| 95 | 1"-8 X 4-1/2" | F-100091 | F-100190 |
| 95 | 1"-8 X 4-3/4" | F-100092 | F-100191 |
| 85 | 1"-8 X 5" | F-100093 | F-100192 |
| 70 | 1"-8 X 5-1/2" | F-100095 | F-100193 |
| 70 | 1"-8 X 6" | F-100097 | F-100194 |



A325 Hex Bolts (Type 1) - Plain Steel

These items are all sold separate and must be ordered as individual line items.



| | | A325 | A194 2H | F436 |
|--------------------|------------------|-------------|----------------|---------------|
| Bolts Per Full Keg | Size | Bolt Part # | Hex Nut Part # | Washer Part # |
| 1710 | 1/2"-13 X 1-1/4" | F-100315 | F-100250 | F-93698 |
| 1560 | 1/2"-13 X 1-1/2" | F-100316 | F-100250 | F-93698 |
| 1420 | 1/2"-13 X 1-3/4" | F-100317 | F-100250 | F-93698 |
| 1290 | 1/2"-13 X 2" | F-100318 | F-100250 | F-93698 |
| 1190 | 1/2"-13 X 2-1/4" | F-100319 | F-100250 | F-93698 |
| 1100 | 1/2"-13 X 2-1/2" | F-100320 | F-100250 | F-93698 |
| 1000 | 1/2"-13 X 2-3/4" | F-100321 | F-100250 | F-93698 |
| 950 | 1/2"-13 X 3" | F-100322 | F-100250 | F-93698 |
| 850 | 1/2"-13 X 3-1/4" | F-100323 | F-100250 | F-93698 |
| 750 | 1/2"-13 X 3-1/2" | F-100324 | F-100250 | F-93698 |
| 600 | 1/2"-13 X 3-3/4" | F-100325 | F-100250 | F-93698 |
| 600 | 1/2"-13 X 4" | F-100326 | F-100250 | F-93698 |



STRUCTURAL

STRUCTURAL

A325 Hex Bolts (Type 1) - Plain Steel (continued)



These items are all sold separate and must be ordered as individual line items.



| Bolts Per Full Keg | Size | A325 | A194 2H | F436 |
|--------------------|------------------|-------------|----------------|---------------|
| | | Bolt Part # | Hex Nut Part # | Washer Part # |
| 1050 | 5/8"-11 X 1-1/2" | F-100333 | F-100252 | F-93699 |
| 900 | 5/8"-11 X 1-3/4" | F-100334 | F-100252 | F-93699 |
| 875 | 5/8"-11 X 2" | F-100335 | F-100252 | F-93699 |
| 775 | 5/8"-11 X 2-1/4" | F-100336 | F-100252 | F-93699 |
| 725 | 5/8"-11 X 2-1/2" | F-100337 | F-100252 | F-93699 |
| 600 | 5/8"-11 X 2-3/4" | F-100338 | F-100252 | F-93699 |
| 600 | 5/8"-11 X 3" | F-100339 | F-100252 | F-93699 |
| 550 | 5/8"-11 X 3-1/4" | F-100340 | F-100252 | F-93699 |
| 500 | 5/8"-11 X 3-1/2" | F-100341 | F-100252 | F-93699 |
| 450 | 5/8"-11 X 3-3/4" | F-100342 | F-100252 | F-93699 |
| 400 | 5/8"-11 X 4" | F-100343 | F-100252 | F-93699 |
| 350 | 5/8"-11 X 4-1/2" | F-100345 | F-100252 | F-93699 |
| 300 | 5/8"-11 X 5" | F-100347 | F-100252 | F-93699 |
| | | | | |
| 650 | 3/4"-10 X 1-1/2" | F-100350 | F-100253 | F-93700 |
| 650 | 3/4"-10 X 1-3/4" | F-100351 | F-100253 | F-93700 |
| 550 | 3/4"-10 X 2" | F-100352 | F-100253 | F-93700 |
| 525 | 3/4"-10 X 2-1/4" | F-100353 | F-100253 | F-93700 |
| 475 | 3/4"-10 X 2-1/2" | F-100354 | F-100253 | F-93700 |
| 425 | 3/4"-10 X 2-3/4" | F-100355 | F-100253 | F-93700 |
| 400 | 3/4"-10 X 3" | F-100356 | F-100253 | F-93700 |
| 375 | 3/4"-10 X 3-1/4" | F-100357 | F-100253 | F-93700 |
| 350 | 3/4"-10 X 3-1/2" | F-100358 | F-100253 | F-93700 |
| 300 | 3/4"-10 X 4" | F-100360 | F-100253 | F-93700 |
| 275 | 3/4"-10 X 4-1/2" | F-100362 | F-100253 | F-93700 |
| 225 | 3/4"-10 X 5" | F-100364 | F-100253 | F-93700 |
| 225 | 3/4"-10 X 5-1/2" | F-100366 | F-100253 | F-93700 |
| 200 | 3/4"-10 X 6" | F-100368 | F-100253 | F-93700 |
| 120 | 3/4"-10 X 8" | F-100370 | F-100253 | F-93700 |
| 120 | 3/4"-10 X 8-1/2" | F-100371 | F-100253 | F-93700 |
| 100 | 3/4"-10 X 9" | F-100372 | F-100253 | F-93700 |
| | | A325 | A194 2H | F436 |

STRUCTURAL

A325 Hex Bolts (Type 1) - Plain Steel

These items are all sold separate and must be ordered as individual line items.

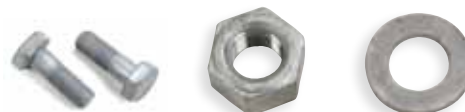


| Bolts Per Full Keg | Size | Bolt Part # | Hex Nut Part # | Washer Part # |
|--------------------|-----------------|-------------|----------------|---------------|
| 425 | 7/8"-9 X 2" | F-100400 | F-100254 | F-93701 |
| 375 | 7/8"-9 X 2-1/4" | F-100401 | F-100254 | F-93701 |
| 350 | 7/8"-9 X 2-1/2" | F-100402 | F-100254 | F-93701 |
| 325 | 7/8"-9 X 2-3/4" | F-100403 | F-100254 | F-93701 |
| 300 | 7/8"-9 X 3" | F-100404 | F-100254 | F-93701 |
| 275 | 7/8"-9 X 3-1/4" | F-100405 | F-100254 | F-93701 |
| 250 | 7/8"-9 X 3-1/2" | F-100406 | F-100254 | F-93701 |
| 250 | 7/8"-9 X 3-3/4" | F-100407 | F-100254 | F-93701 |
| 225 | 7/8"-9 X 4" | F-100408 | F-100254 | F-93701 |
| 200 | 7/8"-9 X 4-1/2" | F-100410 | F-100254 | F-93701 |
| 180 | 7/8"-9 X 4-3/4" | F-100411 | F-100254 | F-93701 |
| 175 | 7/8"-9 X 5" | F-100412 | F-100254 | F-93701 |
| 150 | 7/8"-9 X 5-1/4" | F-100413 | F-100254 | F-93701 |
| 150 | 7/8"-9 X 5-1/2" | F-100414 | F-100254 | F-93701 |
| 135 | 7/8"-9 X 6" | F-100416 | F-100254 | F-93701 |
| 90 | 7/8"-9 X 8" | F-100422 | F-100254 | F-93701 |



STRUCTURAL

A325 Hex Bolts - (Type 1) Galvanized



These items are all sold separate and must be ordered as individual line items.



| | | Bolts - A325 | Nuts - A194 2H | Washer - F436 |
|--------------------|------------------|--------------|----------------|---------------|
| Bolts Per Full Keg | Size | Bolt Part # | Hex Nut Part # | Washer Part # |
| 1710 | 1/2"-13 X 1-1/4" | F-99509 | F-99405 | F-99455 |
| 1560 | 1/2"-13 X 1-1/2" | F-99510 | F-99405 | F-99455 |
| 1420 | 1/2"-13 X 1-3/4" | F-99511 | F-99405 | F-99455 |
| 1290 | 1/2"-13 X 2" | F-99512 | F-99405 | F-99455 |
| 1100 | 1/2"-13 X 2-1/2" | F-99514 | F-99405 | F-99455 |
| 1000 | 1/2"-13 X 2-3/4" | F-99515 | F-99405 | F-99455 |
| 950 | 1/2"-13 X 3" | F-99516 | F-99405 | F-99455 |
| 750 | 1/2"-13 X 3-1/2" | F-99518 | F-99405 | F-99455 |
| 600 | 1/2"-13 X 4" | F-99520 | F-99405 | F-99455 |
| | | | | |
| 1050 | 5/8"-11 X 1-1/2" | F-99552 | F-99407 | F-99457 |
| 900 | 5/8"-11 X 1-3/4" | F-99553 | F-99407 | F-99457 |
| 875 | 5/8"-11 X 2" | F-99554 | F-99407 | F-99457 |
| 775 | 5/8"-11 X 2-1/4" | F-99555 | F-99407 | F-99457 |
| 725 | 5/8"-11 X 2-1/2" | F-99556 | F-99407 | F-99457 |
| 400 | 5/8"-11 X 4" | F-99562 | F-99407 | F-99457 |
| 300 | 5/8"-11 X 5" | F-99566 | F-99407 | F-99457 |
| | | | | |
| 650 | 3/4"-10 X 1-1/2" | F-99608 | F-99408 | F-99458 |
| 650 | 3/4"-10 X 1-3/4" | F-99609 | F-99408 | F-99458 |
| 550 | 3/4"-10 X 2" | F-99610 | F-99408 | F-99458 |
| 525 | 3/4"-10 X 2-1/4" | F-99611 | F-99408 | F-99458 |
| 475 | 3/4"-10 X 2-1/2" | F-99612 | F-99408 | F-99458 |
| 425 | 3/4"-10 X 2-3/4" | F-99613 | F-99408 | F-99458 |
| 400 | 3/4"-10 X 3" | F-99614 | F-99408 | F-99458 |
| 350 | 3/4"-10 X 3-1/2" | F-99616 | F-99408 | F-99458 |
| 325 | 3/4"-10 X 3-3/4" | F-99617 | F-99408 | F-99458 |
| 300 | 3/4"-10 X 4" | F-99618 | F-99408 | F-99458 |
| 200 | 3/4"-10 X 6" | F-99622 | F-99408 | F-99458 |
| 120 | 3/4"-10 X 8" | F-99624 | F-99408 | F-99458 |
| 100 | 3/4"-10 X 9" | F-99625 | F-99408 | F-99458 |

STRUCTURAL

A325 Hex Bolts - (Type 1) Galvanized

These items are all sold separate and must be ordered as individual line items.



| | | Bolts - A325 | Nuts - A194 2H | Washer - F436 |
|--------------------|-----------------|--------------|----------------|---------------|
| Bolts Per Full Keg | Size | Bolt Part # | Hex Nut Part # | Washer Part # |
| 425 | 7/8"-9 X 2" | F-99632 | F-99409 | F-99459 |
| 375 | 7/8"-9 X 2-1/4" | F-99633 | F-99409 | F-99459 |
| 350 | 7/8"-9 X 2-1/2" | F-99634 | F-99409 | F-99459 |
| 325 | 7/8"-9 X 2-3/4" | F-99635 | F-99409 | F-99459 |
| 250 | 7/8"-9 X 3-1/2" | F-99638 | F-99409 | F-99459 |
| 225 | 7/8"-9 X 4" | F-99640 | F-99409 | F-99459 |
| 135 | 7/8"-9 X 6" | F-99648 | F-99409 | F-99459 |



Structural Nuts - Heavy Hex - Plain



| Nuts Per Full Keg | Size | A563 Grade DH | A194 Grade 2H | A563 Grade C |
|-------------------|------|---------------|---------------|--------------|
| 3000 | 1/2" | F-100210 | F-100250 | F-100280 |
| 1800 | 5/8" | F-100212 | F-100252 | F-100282 |
| 1000 | 3/4" | F-100213 | F-100253 | F-100283 |
| 650 | 7/8" | F-100214 | F-100254 | F-100284 |
| 500 | 1" | F-100215 | F-100255 | F-100285 |

STRUCTURAL

STRUCTURAL

Structural Nuts - Heavy Hex - Galvanized



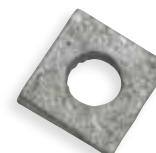
| Nuts Per Full Keg | Size | A194 Grade 2H |
|-------------------|------|----------------|
| 3000 | 1/2" | F-99405 |
| 1800 | 5/8" | F-99407 |
| 1000 | 3/4" | F-99408 |
| 650 | 7/8" | F-99409 |
| 500 | 1" | F-99410 |

Structural Washers - F436



| Carton Qty. | Size | Plain Steel | Galvanized |
|-------------|------|----------------|----------------|
| 1500 | 1/2" | F-93698 | F-99455 |
| 1250 | 5/8" | F-93699 | F-99457 |
| 1125 | 3/4" | F-93700 | F-99458 |
| 650 | 7/8" | F-93701 | F-99459 |
| 500 | 1" | F-93702 | F-99460 |

Bevel Wash- ers



| Size | Plain Steel | Galvanized |
|------|-----------------|----------------|
| 1/2" | F-93240P | F-99154 |
| 5/8" | F-93242P | F-99156 |
| 3/4" | F-93243P | F-99157 |
| 7/8" | F-93244P | F-99158 |
| 1" | F-93245P | F-99159 |

STRUCTURAL

**B7 Studs -
Plain Steel**
Measured
end to end.



| Size | B7 Stud Part # | A194 2H Nut Part # | F436 Washer Part # |
|------------------|----------------|--------------------|--------------------|
| 1/2"-13 X 1/2" | F-112100 | F-100250 | F-93698 |
| 1/2"-13 X 3/4" | F-112101 | F-100250 | F-93698 |
| 1/2"-13 X 1" | F-112102 | F-100250 | F-93698 |
| 1/2"-13 X 1-1/4" | F-112103 | F-100250 | F-93698 |
| 1/2"-13 X 1-1/2" | F-112104 | F-100250 | F-93698 |
| 1/2"-13 X 1-3/4" | F-112105 | F-100250 | F-93698 |
| 1/2"-13 X 2" | F-112106 | F-100250 | F-93698 |
| 1/2"-13 X 2-1/4" | F-112107 | F-100250 | F-93698 |
| 1/2"-13 X 2-1/2" | F-112108 | F-100250 | F-93698 |
| 1/2"-13 X 2-3/4" | F-112109 | F-100250 | F-93698 |
| 1/2"-13 X 3" | F-112110 | F-100250 | F-93698 |
| 1/2"-13 X 3-1/4" | F-112111 | F-100250 | F-93698 |
| 1/2"-13 X 3-1/2" | F-112112 | F-100250 | F-93698 |
| 1/2"-13 X 3-3/4" | F-112113 | F-100250 | F-93698 |
| 1/2"-13 X 4" | F-112114 | F-100250 | F-93698 |
| 1/2"-13 X 4-1/4" | F-112115 | F-100250 | F-93698 |
| 1/2"-13 X 4-1/2" | F-112116 | F-100250 | F-93698 |
| 1/2"-13 X 4-3/4" | F-112117 | F-100250 | F-93698 |
| 1/2"-13 X 5" | F-112118 | F-100250 | F-93698 |
| 1/2"-13 X 6" | F-112122 | F-100250 | F-93698 |
| | | | |
| 5/8"-11 X 1/2" | F-112200 | F-100252 | F-93699 |
| 5/8"-11 X 3/4" | F-112201 | F-100252 | F-93699 |
| 5/8"-11 X 1" | F-112202 | F-100252 | F-93699 |
| 5/8"-11 X 1-1/4" | F-112203 | F-100252 | F-93699 |
| 5/8"-11 X 1-1/2" | F-112204 | F-100252 | F-93699 |
| 5/8"-11 X 1-3/4" | F-112205 | F-100252 | F-93699 |
| 5/8"-11 X 2" | F-112206 | F-100252 | F-93699 |
| 5/8"-11 X 2-1/4" | F-112207 | F-100252 | F-93699 |
| 5/8"-11 X 2-1/2" | F-112208 | F-100252 | F-93699 |
| 5/8"-11 X 2-3/4" | F-112209 | F-100252 | F-93699 |
| 5/8"-11 X 3" | F-112210 | F-100252 | F-93699 |



STRUCTURAL

STRUCTURAL

**B7 Studs -
Plain Steel**
Measured end to end.
(continued)



| Size | B7 Stud Part # | A194 2H Nut Part # | F436 Washer Part # |
|------------------|----------------|--------------------|--------------------|
| 5/8"-11 X 3-1/4" | F-112211 | F-100252 | F-93699 |
| 5/8"-11 X 3-1/2" | F-112212 | F-100252 | F-93699 |
| 5/8"-11 X 3-3/4" | F-112213 | F-100252 | F-93699 |
| 5/8"-11 X 4" | F-112214 | F-100252 | F-93699 |
| 5/8"-11 X 4-1/4" | F-112215 | F-100252 | F-93699 |
| 5/8"-11 X 4-1/2" | F-112216 | F-100252 | F-93699 |
| 5/8"-11 X 4-3/4" | F-112217 | F-100252 | F-93699 |
| 5/8"-11 X 5" | F-112218 | F-100252 | F-93699 |
| 5/8"-11 X 5-1/4" | F-112219 | F-100252 | F-93699 |
| 5/8"-11 X 5-1/2" | F-112220 | F-100252 | F-93699 |
| 5/8"-11 X 5-3/4" | F-112221 | F-100252 | F-93699 |
| 5/8"-11 X 6" | F-112222 | F-100252 | F-93699 |
| 5/8"-11 X 6-1/4" | F-112223 | F-100252 | F-93699 |
| 5/8"-11 X 6-1/2" | F-112224 | F-100252 | F-93699 |
| 5/8"-11 X 6-3/4" | F-112225 | F-100252 | F-93699 |
| 5/8"-11 X 7" | F-112226 | F-100252 | F-93699 |
| 5/8"-11 X 7-1/4" | F-112227 | F-100252 | F-93699 |
| 5/8"-11 X 7-1/2" | F-112228 | F-100252 | F-93699 |
| 5/8"-11 X 7-3/4" | F-112229 | F-100252 | F-93699 |
| 5/8"-11 X 8" | F-112230 | F-100252 | F-93699 |
| | | | |
| 3/4"-10 X 1/2" | F-112250 | F-100253 | F-93700 |
| 3/4"-10 X 3/4" | F-112251 | F-100253 | F-93700 |
| 3/4"-10 X 1" | F-112252 | F-100253 | F-93700 |
| 3/4"-10 X 1-1/4" | F-112253 | F-100253 | F-93700 |
| 3/4"-10 X 1-1/2" | F-112254 | F-100253 | F-93700 |
| 3/4"-10 X 1-3/4" | F-112255 | F-100253 | F-93700 |
| 3/4"-10 X 2" | F-112256 | F-100253 | F-93700 |
| 3/4"-10 X 2-1/4" | F-112257 | F-100253 | F-93700 |
| 3/4"-10 X 2-1/2" | F-112258 | F-100253 | F-93700 |
| 3/4"-10 X 2-3/4" | F-112259 | F-100253 | F-93700 |
| 3/4"-10 X 3" | F-112260 | F-100253 | F-93700 |

STRUCTURAL

**B7 Studs -
Plain Steel**
Measured end to end.
(continued)



| Size | B7 Stud Part # | A194 2H Nut Part # | F436 Washer Part # |
|-------------------|----------------|--------------------|--------------------|
| 3/4"-10 X 3-1/4" | F-112261 | F-100253 | F-93700 |
| 3/4"-10 X 3-1/2" | F-112262 | F-100253 | F-93700 |
| 3/4"-10 X 3-3/4" | F-112263 | F-100253 | F-93700 |
| 3/4"-10 X 4" | F-112264 | F-100253 | F-93700 |
| 3/4"-10 X 4-1/4" | F-112265 | F-100253 | F-93700 |
| 3/4"-10 X 4-1/2" | F-112266 | F-100253 | F-93700 |
| 3/4"-10 X 4-3/4" | F-112267 | F-100253 | F-93700 |
| 3/4"-10 X 5" | F-112268 | F-100253 | F-93700 |
| 3/4"-10 X 5-1/4" | F-112269 | F-100253 | F-93700 |
| 3/4"-10 X 5-1/2" | F-112270 | F-100253 | F-93700 |
| 3/4"-10 X 5-3/4" | F-112271 | F-100253 | F-93700 |
| 3/4"-10 X 6" | F-112272 | F-100253 | F-93700 |
| 3/4"-10 X 6-1/4" | F-112273 | F-100253 | F-93700 |
| 3/4"-10 X 6-1/2" | F-112274 | F-100253 | F-93700 |
| 3/4"-10 X 6-3/4" | F-112275 | F-100253 | F-93700 |
| 3/4"-10 X 7" | F-112276 | F-100253 | F-93700 |
| 3/4"-10 X 7-1/4" | F-112277 | F-100253 | F-93700 |
| 3/4"-10 X 7-1/2" | F-112278 | F-100253 | F-93700 |
| 3/4"-10 X 7-3/4" | F-112279 | F-100253 | F-93700 |
| 3/4"-10 X 8" | F-112280 | F-100253 | F-93700 |
| 3/4"-10 X 8-1/4" | F-112281 | F-100253 | F-93700 |
| 3/4"-10 X 8-1/2" | F-112282 | F-100253 | F-93700 |
| 3/4"-10 X 8-3/4" | F-112283 | F-100253 | F-93700 |
| 3/4"-10 X 9" | F-112284 | F-100253 | F-93700 |
| 3/4"-10 X 9-1/4" | F-112285 | F-100253 | F-93700 |
| 3/4"-10 X 9-1/2" | F-112286 | F-100253 | F-93700 |
| 3/4"-10 X 9-3/4" | F-112287 | F-100253 | F-93700 |
| 3/4"-10 X 10" | F-112288 | F-100253 | F-93700 |
| 3/4"-10 X 10-1/4" | F-112289 | F-100253 | F-93700 |
| 3/4"-10 X 10-1/2" | F-112290 | F-100253 | F-93700 |



STRUCTURAL

STRUCTURAL

**B7 Studs -
Plain Steel**
Measured end to end.
(continued)



| Size | B7 Stud Part # | A194 2H Nut Part # | F436 Washer Part # |
|-----------------|----------------|--------------------|--------------------|
| 7/8"-9 X 1/2" | F-112300 | F-100254 | F-93701 |
| 7/8"-9 X 3/4" | F-112301 | F-100254 | F-93701 |
| 7/8"-9 X 1" | F-112302 | F-100254 | F-93701 |
| 7/8"-9 X 1-1/4" | F-112303 | F-100254 | F-93701 |
| 7/8"-9 X 1-1/2" | F-112304 | F-100254 | F-93701 |
| 7/8"-9 X 1-3/4" | F-112305 | F-100254 | F-93701 |
| 7/8"-9 X 2" | F-112306 | F-100254 | F-93701 |
| 7/8"-9 X 2-1/4" | F-112307 | F-100254 | F-93701 |
| 7/8"-9 X 2-1/2" | F-112308 | F-100254 | F-93701 |
| 7/8"-9 X 2-3/4" | F-112309 | F-100254 | F-93701 |
| 7/8"-9 X 3" | F-112310 | F-100254 | F-93701 |
| 7/8"-9 X 3-1/4" | F-112311 | F-100254 | F-93701 |
| 7/8"-9 X 3-1/2" | F-112312 | F-100254 | F-93701 |
| 7/8"-9 X 3-3/4" | F-112313 | F-100254 | F-93701 |
| 7/8"-9 X 4" | F-112314 | F-100254 | F-93701 |
| 7/8"-9 X 4-1/4" | F-112315 | F-100254 | F-93701 |
| 7/8"-9 X 4-1/2" | F-112316 | F-100254 | F-93701 |
| 7/8"-9 X 4-3/4" | F-112317 | F-100254 | F-93701 |
| 7/8"-9 X 5" | F-112318 | F-100254 | F-93701 |
| 7/8"-9 X 5-1/4" | F-112319 | F-100254 | F-93701 |
| 7/8"-9 X 5-1/2" | F-112320 | F-100254 | F-93701 |
| 7/8"-9 X 5-3/4" | F-112321 | F-100254 | F-93701 |
| 7/8"-9 X 6" | F-112322 | F-100254 | F-93701 |
| 7/8"-9 X 6-1/4" | F-112323 | F-100254 | F-93701 |
| 7/8"-9 X 6-1/2" | F-112324 | F-100254 | F-93701 |
| 7/8"-9 X 6-3/4" | F-112325 | F-100254 | F-93701 |
| 7/8"-9 X 7" | F-112326 | F-100254 | F-93701 |
| 7/8"-9 X 7-1/4" | F-112327 | F-100254 | F-93701 |
| 7/8"-9 X 7-1/2" | F-112328 | F-100254 | F-93701 |
| 7/8"-9 X 7-3/4" | F-112329 | F-100254 | F-93701 |
| 7/8"-9 X 8" | F-112330 | F-100254 | F-93701 |
| 7/8"-9 X 8-1/4" | F-112331 | F-100254 | F-93701 |

STRUCTURAL

**B7 Studs -
Plain Steel**
Measured end to end.
(continued)



| Size | B7 Stud Part # | A194 2H Nut Part # | F436 Washer Part # |
|-----------------|----------------|--------------------|--------------------|
| 7/8"-9 X 8-1/2" | F-112332 | F-100254 | F-93701 |
| 7/8"-9 X 8-3/4" | F-112333 | F-100254 | F-93701 |
| 7/8"-9 X 9" | F-112334 | F-100254 | F-93701 |
| 7/8"-9 X 11" | F-112342 | F-100254 | F-93701 |
| | | | |
| 1"-8 X 1/2" | F-112400 | F-100255 | F-93702 |
| 1"-8 X 3/4" | F-112401 | F-100255 | F-93702 |
| 1"-8 X 1" | F-112402 | F-100255 | F-93702 |
| 1"-8 X 1-1/4" | F-112403 | F-100255 | F-93702 |
| 1"-8 X 1-1/2" | F-112404 | F-100255 | F-93702 |
| 1"-8 X 1-3/4" | F-112405 | F-100255 | F-93702 |
| 1"-8 X 2" | F-112406 | F-100255 | F-93702 |
| 1"-8 X 2-1/4" | F-112407 | F-100255 | F-93702 |
| 1"-8 X 2-1/2" | F-112408 | F-100255 | F-93702 |
| 1"-8 X 2-3/4" | F-112409 | F-100255 | F-93702 |
| 1"-8 X 3" | F-112410 | F-100255 | F-93702 |
| 1"-8 X 3-1/4" | F-112411 | F-100255 | F-93702 |
| 1"-8 X 3-1/2" | F-112412 | F-100255 | F-93702 |
| 1"-8 X 3-3/4" | F-112413 | F-100255 | F-93702 |
| 1"-8 X 4" | F-112414 | F-100255 | F-93702 |
| 1"-8 X 4-1/4" | F-112415 | F-100255 | F-93702 |
| 1"-8 X 4-1/2" | F-112416 | F-100255 | F-93702 |
| 1"-8 X 4-3/4" | F-112417 | F-100255 | F-93702 |
| 1"-8 X 5" | F-112418 | F-100255 | F-93702 |
| 1"-8 X 5-1/4" | F-112419 | F-100255 | F-93702 |
| 1"-8 X 5-1/2" | F-112420 | F-100255 | F-93702 |
| 1"-8 X 5-3/4" | F-112421 | F-100255 | F-93702 |
| 1"-8 X 6" | F-112422 | F-100255 | F-93702 |
| 1"-8 X 6-1/4" | F-112423 | F-100255 | F-93702 |
| 1"-8 X 6-1/2" | F-112424 | F-100255 | F-93702 |
| 1"-8 X 6-3/4" | F-112425 | F-100255 | F-93702 |
| 1"-8 X 7" | F-112426 | F-100255 | F-93702 |



STRUCTURAL

STRUCTURAL

**B7 Studs -
Plain Steel**
Measured end to end.
(continued)



| Size | B7 Stud Part # | A194 2H Nut Part # | F436 Washer Part # |
|-------------------|----------------|--------------------|--------------------|
| 1"-8 X 7-1/4" | F-112427 | F-100255 | F-93702 |
| 1"-8 X 7-1/2" | F-112428 | F-100255 | F-93702 |
| 1"-8 X 7-3/4" | F-112429 | F-100255 | F-93702 |
| 1"-8 X 8" | F-112430 | F-100255 | F-93702 |
| 1"-8 X 8-1/4" | F-112431 | F-100255 | F-93702 |
| 1"-8 X 8-1/2" | F-112432 | F-100255 | F-93702 |
| 1"-8 X 8-3/4" | F-112433 | F-100255 | F-93702 |
| 1"-8 X 9" | F-112434 | F-100255 | F-93702 |
| 1"-8 X 9-1/4" | F-112435 | F-100255 | F-93702 |
| 1"-8 X 9-1/2" | F-112436 | F-100255 | F-93702 |
| 1"-8 X 9-3/4" | F-112437 | F-100255 | F-93702 |
| 1"-8 X 10" | F-112438 | F-100255 | F-93702 |
| 1"-8 X 13-1/2" | F-112452 | F-100255 | F-93702 |
| | | | |
| 1-1/8"-7 X 1/2" | F-112500 | F-100256 | F-93703 |
| 1-1/8"-7 X 3/4" | F-112501 | F-100256 | F-93703 |
| 1-1/8"-7 X 1" | F-112502 | F-100256 | F-93703 |
| 1-1/8"-7 X 1-1/4" | F-112503 | F-100256 | F-93703 |
| 1-1/8"-7 X 1-1/2" | F-112504 | F-100256 | F-93703 |
| 1-1/8"-7 X 1-3/4" | F-112505 | F-100256 | F-93703 |
| 1-1/8"-7 X 2" | F-112506 | F-100256 | F-93703 |
| 1-1/8"-7 X 2-1/4" | F-112507 | F-100256 | F-93703 |
| 1-1/8"-7 X 2-1/2" | F-112508 | F-100256 | F-93703 |
| 1-1/8"-7 X 2-3/4" | F-112509 | F-100256 | F-93703 |
| 1-1/8"-7 X 3" | F-112510 | F-100256 | F-93703 |
| 1-1/8"-7 X 3-1/4" | F-112511 | F-100256 | F-93703 |
| 1-1/8"-7 X 3-1/2" | F-112512 | F-100256 | F-93703 |
| 1-1/8"-7 X 3-3/4" | F-112513 | F-100256 | F-93703 |
| 1-1/8"-7 X 4" | F-112514 | F-100256 | F-93703 |
| 1-1/8"-7 X 4-1/4" | F-112515 | F-100256 | F-93703 |
| 1-1/8"-7 X 4-1/2" | F-112516 | F-100256 | F-93703 |
| 1-1/8"-7 X 4-3/4" | F-112517 | F-100256 | F-93703 |

STRUCTURAL

B7 Studs - Plain Steel
Measured end to end.
(continued)



| Size | B7 Stud Part # | A194 2H Nut Part # | F436 Washer Part # |
|--------------------|----------------|--------------------|--------------------|
| 1-1/8"-7 X 5" | F-112518 | F-100256 | F-93703 |
| 1-1/8"-7 X 5-1/4" | F-112519 | F-100256 | F-93703 |
| 1-1/8"-7 X 5-1/2" | F-112520 | F-100256 | F-93703 |
| 1-1/8"-7 X 5-3/4" | F-112521 | F-100256 | F-93703 |
| 1-1/8"-7 X 6" | F-112522 | F-100256 | F-93703 |
| 1-1/8"-7 X 6-1/4" | F-112523 | F-100256 | F-93703 |
| 1-1/8"-7 X 6-1/2" | F-112524 | F-100256 | F-93703 |
| 1-1/8"-7 X 6-3/4" | F-112525 | F-100256 | F-93703 |
| 1-1/8"-7 X 7" | F-112526 | F-100256 | F-93703 |
| 1-1/8"-7 X 7-1/4" | F-112527 | F-100256 | F-93703 |
| 1-1/8"-7 X 7-1/2" | F-112528 | F-100256 | F-93703 |
| 1-1/8"-7 X 7-3/4" | F-112529 | F-100256 | F-93703 |
| 1-1/8"-7 X 8" | F-112530 | F-100256 | F-93703 |
| 1-1/8"-7 X 8-1/4" | F-112531 | F-100256 | F-93703 |
| 1-1/8"-7 X 8-1/2" | F-112532 | F-100256 | F-93703 |
| 1-1/8"-7 X 8-3/4" | F-112533 | F-100256 | F-93703 |
| 1-1/8"-7 X 9" | F-112534 | F-100256 | F-93703 |
| 1-1/8"-7 X 9-1/4" | F-112535 | F-100256 | F-93703 |
| 1-1/8"-7 X 9-1/2" | F-112536 | F-100216 | F-93703 |
| 1-1/8"-7 X 9-3/4" | F-112537 | F-100256 | F-93703 |
| 1-1/8"-7 X 10" | F-112538 | F-100256 | F-93703 |
| 1-1/8"-7 X 10-1/4" | F-112539 | F-100256 | F-93703 |
| 1-1/8"-7 X 10-1/2" | F-112540 | F-100256 | F-93703 |
| 1-1/8"-7 X 10-3/4" | F-112541 | F-100256 | F-93703 |
| 1-1/8"-7 X 11" | F-112542 | F-100256 | F-93703 |
| 1-1/8"-7 X 11-1/4" | F-112543 | F-100256 | F-93703 |
| 1-1/8"-7 X 11-1/2" | F-112544 | F-100256 | F-93703 |
| 1-1/8"-7 X 11-3/4" | F-112545 | F-100256 | F-93703 |
| 1-1/8"-7 X 12" | F-112546 | F-100256 | F-93703 |
| 1-1/8"-7 X 12-1/4" | F-112547 | F-100256 | F-93703 |
| 1-1/8"-7 X 12-1/2" | F-112548 | F-100256 | F-93703 |
| 1-1/8"-7 X 12-3/4" | F-112549 | F-100256 | F-93703 |



STRUCTURAL

STRUCTURAL

**B7 Studs -
Plain Steel**
Measured end to end.
(continued)



| Size | B7 Stud Part # | A194 2H Nut Part # | F436 Washer Part # |
|-------------------|----------------|--------------------|--------------------|
| 1-1/8"-7 X 13" | F-112550 | F-100256 | F-93703 |
| 1-1/4"-7 X 1/2" | F-112600 | F-100257 | F-93704 |
| 1-1/4"-7 X 3/4" | F-112601 | F-100257 | F-93704 |
| 1-1/4"-7 X 1" | F-112602 | F-100257 | F-93704 |
| 1-1/4"-7 X 1-1/4" | F-112603 | F-100257 | F-93704 |
| 1-1/4"-7 X 1-1/2" | F-112604 | F-100257 | F-93704 |
| 1-1/4"-7 X 1-3/4" | F-112605 | F-100257 | F-93704 |
| 1-1/4"-7 X 2" | F-112606 | F-100257 | F-93704 |
| 1-1/4"-7 X 2-1/4" | F-112607 | F-100257 | F-93704 |
| 1-1/4"-7 X 2-1/2" | F-112608 | F-100257 | F-93704 |
| 1-1/4"-7 X 2-3/4" | F-112609 | F-100257 | F-93704 |
| 1-1/4"-7 X 3" | F-112610 | F-100257 | F-93704 |
| 1-1/4"-7 X 3-1/4" | F-112611 | F-100257 | F-93704 |
| 1-1/4"-7 X 3-1/2" | F-112612 | F-100257 | F-93704 |
| 1-1/4"-7 X 3-3/4" | F-112613 | F-100257 | F-93704 |
| 1-1/4"-7 X 4" | F-112614 | F-100257 | F-93704 |
| 1-1/4"-7 X 4-1/4" | F-112615 | F-100257 | F-93704 |
| 1-1/4"-7 X 4-1/2" | F-112616 | F-100257 | F-93704 |
| 1-1/4"-7 X 4-3/4" | F-112617 | F-100257 | F-93704 |
| 1-1/4"-7 X 5" | F-112618 | F-100257 | F-93704 |
| 1-1/4"-7 X 5-1/4" | F-112619 | F-100257 | F-93704 |
| 1-1/4"-7 X 5-1/2" | F-112620 | F-100257 | F-93704 |
| 1-1/4"-7 X 5-3/4" | F-112621 | F-100257 | F-93704 |
| 1-1/4"-7 X 6" | F-112622 | F-100257 | F-93704 |
| 1-1/4"-7 X 6-1/4" | F-112623 | F-100257 | F-93704 |
| 1-1/4"-7 X 6-1/2" | F-112624 | F-100257 | F-93704 |
| 1-1/4"-7 X 6-3/4" | F-112625 | F-100257 | F-93704 |
| 1-1/4"-7 X 7" | F-112626 | F-100257 | F-93704 |
| 1-1/4"-7 X 7-1/4" | F-112627 | F-100257 | F-93704 |
| 1-1/4"-7 X 7-1/2" | F-112628 | F-100257 | F-93704 |

STRUCTURAL

**B7 Studs -
Plain Steel**
Measured end to end.
(continued)



| Size | B7 Stud Part # | A194 2H Nut Part # | F436 Washer Part # |
|--------------------|----------------|--------------------|--------------------|
| 1-1/4"-7 X 7-3/4" | F-112629 | F-100257 | F-93704 |
| 1-1/4"-7 X 8" | F-112630 | F-100257 | F-93704 |
| 1-1/4"-7 X 8-1/4" | F-112631 | F-100257 | F-93704 |
| | | | |
| 1-1/2" -6 X 3" | F-112810 | F-100259 | F-93706 |
| 1-1/2" -6 X 4" | F-112814 | F-100259 | F-93706 |
| 1-1/2" -6 X 5" | F-112818 | F-100259 | F-93706 |
| 1-1/2" -6 X 6" | F-112822 | F-100259 | F-93706 |
| 1-1/2" -6 X 7" | F-112826 | F-100259 | F-93706 |
| 1-1/2" -6 X 8" | F-112830 | F-100259 | F-93706 |
| 1-1/2" -6 X 8-1/2" | F-112832 | F-100259 | F-93706 |
| 1-1/2" -6 X 9" | F-112834 | F-100259 | F-93706 |



We can supply double ended studs or anchor bolts in either F1554 or A449. Ask for details.

STRUCTURAL

Bent Anchor Bolts

Plain steel with standard nut and washer.



| Size | Set Part # | Galvanized |
|------------|------------|------------|
| 3/8" X 6" | F-111800 | F-111800G |
| 3/8" X 8" | F-111801 | F-111801G |
| 3/8" X 10" | F-111802 | F-111802G |
| 3/8" X 12" | F-111803 | F-111803G |
| 1/2" X 6" | F-111810 | F-111810G |
| 1/2" X 8" | F-111811 | F-111811G |
| 1/2" X 10" | F-111812 | F-111812G |
| 1/2" X 12" | F-111813 | F-111813G |
| 1/2" X 14" | F-111814 | F-111814G |
| 1/2" X 16" | F-111815 | F-111815G |
| 1/2" X 18" | F-111816 | F-111816G |
| 5/8" X 6" | F-111820 | F-111820G |
| 5/8" X 8" | F-111821 | F-111821G |
| 5/8" X 10" | F-111822 | F-111822G |
| 5/8" X 12" | F-111823 | F-111823G |
| 5/8" X 14" | F-111824 | F-111824G |
| 5/8" X 15" | F-111825 | F-111825G |
| 5/8" X 16" | F-111826 | F-111826G |
| Size | Set Part # | Galvanized |

We sell a large range of anchor bolts. Contact us for job specific quotes.

STRUCTURAL

Bent Anchor Bolts

Plain steel with standard nut and washer. (continued)

| | | |
|------------|----------|-----------|
| 5/8" X 18" | F-111827 | F-111827G |
| 5/8" X 24" | F-111829 | F-111829 |
| 3/4" X 6" | F-111830 | F-111830G |
| 3/4" X 8" | F-111831 | F-111831G |
| 3/4" X 10" | F-111832 | F-111832G |
| 3/4" X 12" | F-111833 | F-111833G |
| 3/4" X 14" | F-111834 | F-111834G |
| 3/4" X 15" | F-111835 | F-111835G |
| 3/4" X 16" | F-111836 | F-111836G |
| 3/4" X 18" | F-111837 | F-111837G |
| 3/4" X 20" | F-111838 | F-111838G |
| 3/4" X 21" | F-111839 | F-111839G |
| 3/4" X 24" | F-111840 | F-111840G |
| 3/4" X 30" | F-111841 | F-111841G |
| 7/8" X 12" | F-111850 | F-111850G |
| 7/8" X 14" | F-111851 | F-111851G |
| 7/8" X 16" | F-111852 | F-111852G |
| 7/8" X 18" | F-111853 | F-111853G |
| 7/8" X 20" | F-111854 | F-111854G |
| 7/8" X 24" | F-111855 | F-111855G |
| 1" X 12" | F-111860 | F-111860G |
| 1" X 14" | F-111861 | F-111861G |
| 1" X 15" | F-111862 | F-111862G |
| 1" X 16" | F-111863 | F-111863G |
| 1" X 18" | F-111864 | F-111864G |
| 1" X 20" | F-111865 | F-111865G |
| 1" X 21" | F-111866 | F-111866G |
| 1" X 24" | F-111867 | F-111867G |
| 1" X 30" | F-111868 | F-111868G |
| 1" X 36" | F-111869 | F-111869G |

